

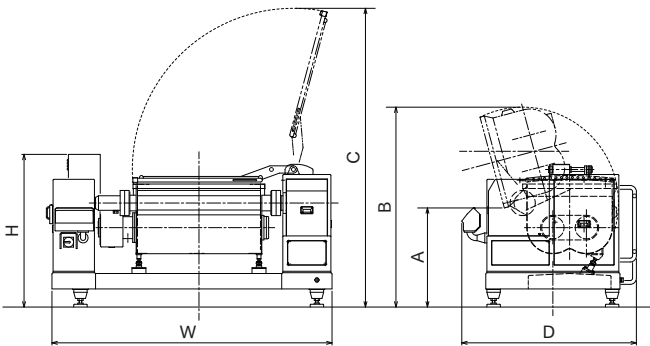
MIXER SERIES

Model		TML-303	TML-403	TML-603	TML-803
Drive	For mixing	3phase 200V 5.5kW		3phase 200V 7.5kW	
	For dumping	3phase 200V 1.5kW		3phase 200V 2.2kW	
Tub	Capacity(full water volume)	350L	450L	700L	900L
	Dumping time	15 sec / 105°		20 sec / 105°	
	Ejection angle			15°	
	Horizontal level	1100mm		1270mm	
	Height During ejection: (Dimensional drawing A)	886mm		893mm	
Dimensions () indicates when tub is dumped: (Dimensional drawing B)		W2325×D1562 ×H1365mm (1787)	W2555×D1562 ×H1365mm (1787)	W3004×D1752 ×H1476mm (1998)	W3304×D1752 ×H1476mm (1998)
Weight		1400kg	1500kg	2250kg	2400kg

Model		TM-603	TM-803
Drive	For mixing	3phase 200V 7.5kW	
	For dumping	3phase 200V 0.75kW	
Tub	Capacity(full water volume)	700L	900L
	Dumping time	19 sec / 105°	
	Ejection angle	15°	
	Horizontal level	1930mm	
	Height During ejection: (Dimensional drawing A)	813mm	
Dimensions		W2844×D1019 ×H1930mm	W3144×D1019 ×H1930mm
Weight		2300kg	2450kg

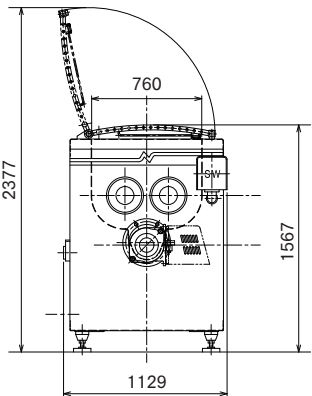
Model		M-404
Drive	For stirring	3phase 200V 7.5kW
	For charging	3phase 200V 1.5kW
Capacity(full water volume)		500L
Ejection time		3.5min / 1patch
Ejection port dimensions		W210×H198mm
Ejection height		595.5mm
Dimensions		W1060×D2152 ×H1567mm
Weight		1200kg

[Dimensions]
TML

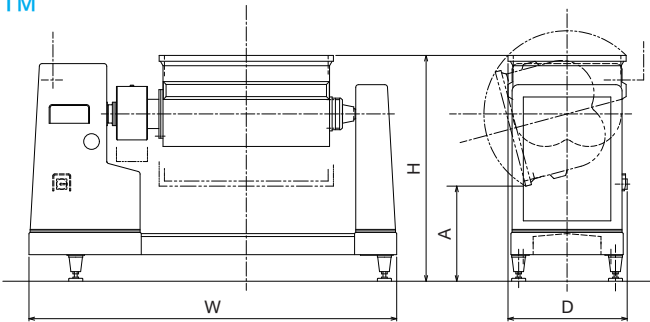


TML	303	403	603	803
W	2325	2555	3004	3304
H	1365	1365	1476	1476
D	1562	1562	1752	1752
A	886	886	893	893
B	1787	1787	1998	1998
C	2460	2671	2572	2504

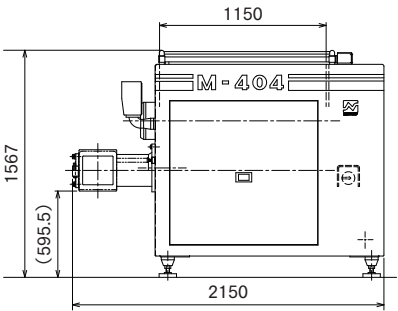
M-404



TM



TM	603	803
W	2844	3144
H	1930	1930
D	1019	1019
A	813	813



Challenging “Perfection”
NIPPON CAREER INDUSTRY CO., LTD.

980-5 Higashi habu-machi,Matsuyama City, Ehime, Japan. 7918043
TEL: +81-89-908-7373
E-mail: eigyou-oversea@nippon-career.co.jp
<https://www.nippon-career.co.jp>

Agent:



NIPPON CAREER
MIXER SERIES
CATALOG



TML-403

MIXER
TML-303/403/603/803
TM-603/803
M-404

High Efficiency Mixing with Dual Axle Overlapping Paddles

Enables highly efficient, uniform mixing. Achieve optimal mixing with Nippon Career's lineup of 7 machines in three patterns.

Program the optimum mixing pattern

- Freely set clockwise and counterclockwise switching, stirring times, and speeds.

Efficient mixing

- Nippon Career's proven dual axle overlap paddle mixing enables fast, even processing.

Does not damage material

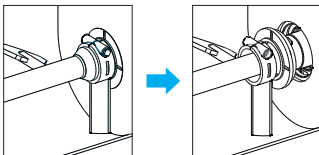
- At the time of ejection, paddle rotation directions selectable; improved paddle shape prevents damage to material.

Exceptionally hygienic and durable

- Every part of the machine that comes in contact with the mixing material, from the tub onwards, as well as the cover panels are made from stainless steel and are exceptionally hygienic and durable.

Improved hygienity

- Terminal triangular paddle can be shifted to extract axle housing, enabling thorough cleaning to prevent bacterial growth.



Ease of operation

- Operation and maintenance are simple and easy.



Nippon Career Industry Mixer Series

Automatic dumping low-rise models Easy to fill low-rise models



TML-303/403/603/803

- One touch tub dumping.
- Low tub position when level (above floor).
- Four tub sizes.

4
tub
sizes

Tub cap.	350ℓ	450ℓ	700ℓ	900ℓ
----------	------	------	------	------

Automatic dumping models Standard large scale mixers



TM-603/803

- One touch tub dumping.
- Two tub sizes.

2
tub
sizes

Tub cap.	700ℓ	900ℓ
----------	------	------

Screw ejection model Easy partial ejection for samples



M-404

- Model with screw-based ejection; doesn't require tub dumping.
- Reduces ejection and cleaning labor.

Tub cap.	500ℓ
----------	------