



NIPPON CAREER
FROZEN CHOPPER
CATALOG

FROZEN CHOPPER

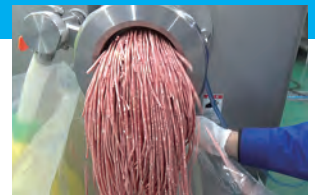


FROZEN CHOPPER
GM-F2

Presenting a chopper specialized for frozen meat [-15°C]

Providing solutions for low-temperature raw materials with handling-intensive requirements, including grinding or post-processing in facilities with scant thawing space and products that are preferably kept cold. Supports as-is insertion of flaked materials that have been processed with our -20°C-rated F-253A flaker.

- Compact in size, yet equipped with a powerful high-torque motor.
- Achieves smooth feeding with bridge-breaking paddles and screw for meat-feeding and discharge.
- Circulates cold/hot water through jacketed cylinder to prevent freezing of cylinder.
- Outfitted with work platform providing handy storage space when disassembling unit for cleaning. Weighty screw slides as well to reduce workload when cleaning.
- Heavy-duty grinding plate is specialized for low-temperature use, maintaining higher durability than conventional products.

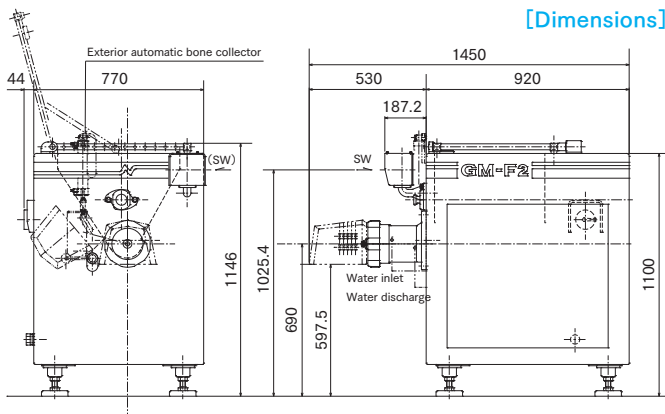


Top left: Bridge-breaking paddles Top right: Jacketed cylinder
Bottom: Meat-feeding/discharge screw

[Specifications]

Model	GM-F2	
Grinder head specifications	Standard grinding: #42 equiv., ring-type(Low-temperature grinding plate: jacketed to prevent freezing of cylinder)	
Power: Three-phase 200V	Feedscrew	11kW
	Paddles	0.4kW
Yield	600kg/h (May vary depending on raw material)	
Feedscrew rotation speed	77.4rpm(50Hz) 78.0rpm(60Hz)	
Paddle rotation speed	12.1rpm(50Hz) 14.5rpm(60Hz)	
Processing temperature	-15°C and above	
Tub capacity	80L	
Circuit breaker capacity	Three-phase 200V 75A	
Power cable	Length	5m
	Thickness	14mmφ
	Plug	N/A
Air supply (with automatic bone collector configuration)	Air pressure	0.5-1.0 MPa
	Consumption	50L/min
	Connection thread diameter (recommended)	R1/2
Water supply (to prevent freezing of cylinder)	Water pressure	Comparable to standard utility water supply (≥0.2 MPa)
	Consumption	Approx. 1 L/min
	Connection thread diameter (recommended)	R1/2
Unit weight	730 kg	
Optional accessories	Exterior automatic bone collector	

[Dimensions]



Challenging "Perfection"
NIPPON CAREER INDUSTRY CO., LTD.

980-5 Higashi habu-machi, Matsuyama City, Ehime, Japan. 7918043
TEL: +81-89-908-7373
E-mail: eigyou-oversea@nippon-career.co.jp
<https://www.nippon-career.co.jp>

Agent: