

G/MG SERIES

G Series Specifications

Model	G-107C	G-157	G-307		G-407	
Type of Grinding	Enterprise # 22	Enterprise # 32	Enterprise # 42	Unger # 42	Enterprise # 52	Unger # 52
Tub capacity	55L	110L	200L		300L	
Delivery port height ("A" in the Dimensional drawing)	527mm	633mm	588mm	548mm	810mm	773mm
Hourly output (theoretical)	650~950kg/h	1000~1450kg/h	Ⓢ1250~2500kg/h Ⓣ 850~1700kg/h		Ⓢ1500~3000kg/h Ⓣ1000~2500kg/h	
Drive(3phase 200V) Feed screw/charging	5.5 /0.75kW	11.0/1.5kW	15.0/2.2kW		30.0/3.7kW	
Dimensions	W620×L1367×H1110mm	W750×L1668×H1373mm	W950×LⓈ2050×H1491mm W950×LⓉ2138×H1491mm		W1040×LⓈ2475×H1842mm W1040×LⓉ2525×H1842mm	
Weight	500kg	650kg	1100kg		1850kg	

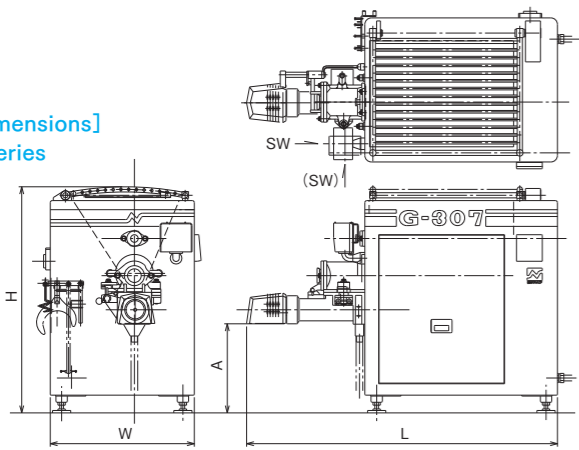
※Ⓢ:Enterprise Ⓣ:Unger ※Optional: Bone collector (internal/external automatic, double)

MG Series Specifications

Model	MG-107C	MG-157	MG-307	
Type of Grinding	Enterprise # 22	Enterprise # 32	Enterprise # 42	Unger # 42
Tub capacity	110L	200L	450L	
Delivery port height ("A" in the Dimensional drawing)	607mm	633mm	588mm	548mm
Hourly output (theoretical)	650~950kg/h	1000~1450kg/h	Ⓢ1250~2500kg/h Ⓣ 850~1700kg/h	
Drive(3phase 200V) Feed screw/charging	5.5/1.5/0.75kW	11.0/3.7/1.5kW	15.0/5.5/2.2kW	
Dimensions	W700×L1527×H1325mm	W800×L1933×H1438mm	W1000×LⓈ2455×H1717mm W1000×LⓉ2543×H1717mm	
Weight	700kg	1090kg	1800kg	

※Ⓢ:Enterprise Ⓣ:Unger ※Optional: Bone collector (internal/external automatic, double)

[Dimensions] G Series



MG Series

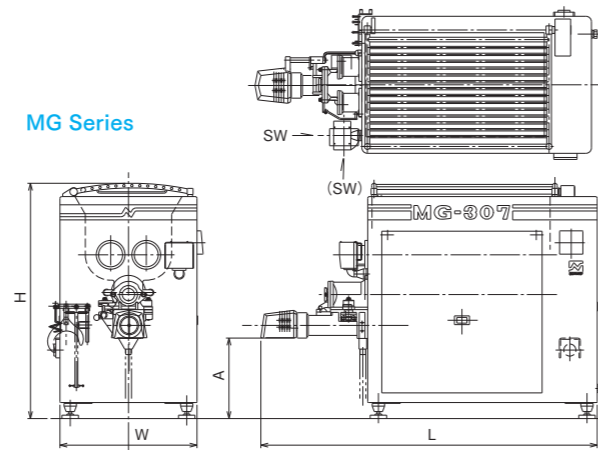


Plate Hole Number Table

(As of July 2022)

Hole diameter	φ 1.1 mm	φ 1.8 mm	φ 2.2 mm	φ 2.4 mm	φ 3.2 mm	φ 4.0 mm	φ 4.8 mm	φ 6.4 mm	φ 8.0 mm	φ 9.5 mm	φ 11.0 mm	φ 12.5 mm	φ 16.0 mm	φ 19.0 mm	φ 20.0 mm	φ 22.0 mm
# 22	φ 90.5	1184	522	390	192	120	84	54	33	24	16	12	8	6		5
# 32	φ 111	1950	804	594	316	206	150	84	54	42	24	24	12	9		7
# 42	φ 142	3420	1344		870	540	366	256	156	90	72	46	34	24	14	10



Challenging "Perfection"
NIPPON CAREER INDUSTRY CO., LTD.

Agent:

980-5 Higashi habu-machi, Matsuyama City, Ehime, Japan. 7918043
TEL: +81-89-908-7373
E-mail: eigyou-oversea@nippon-career.co.jp
https://www.nippon-career.co.jp

Please be aware that product specifications may be changed without notice in order to improve product performance.

Ver.2023.05



NIPPON CAREER
GRINDER / MIXER GRINDER
CATALOG



MG-307

GRINDER / MIXER GRINDER

#22 G-107C / #32 G-157 / #42 G-307 / #52 G-407
#22 MG-107C / #32 MG-157 / #42 MG-307

MIXER GRINDER

Cutting Edge Machines Featuring Highly Washable, Safe, and Thoughtful Construction

Externally screw Threaded plates

- Plate outer circumference is screw threaded and plate is secured directly to the cylinder to minimize plate's looseness reducing the occurrence of problems such as extreme wear and breakage due to abnormal friction between plate and knife.
- No plate stopper keys are needed, eliminating problems caused by key loss and reducing part maintenance/management and burdens involved in part removal and attachment.

Knife push type

- Uses "knife push type" design with internal feed screw spring. Plate and knife kept in contact at the appropriate pressure and at all times. Prevents breakage and excess wear.

Safe design

- Covers are equipped with safety devices (machine will not operate with tub cover or deflector open).

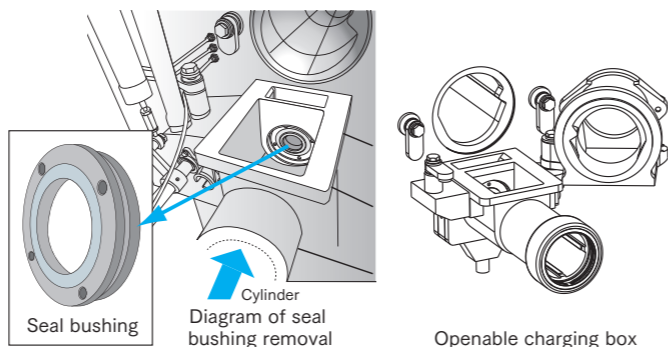


Integrated usage

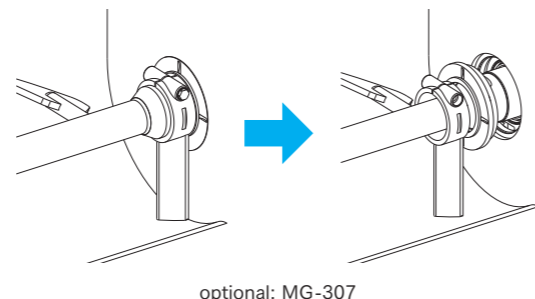
- Connects to separately sold vertical conveyor, enabling automating feeding to the next process in line in a minimum of space and transport distance, preserving meat quality.

Thoughtful construction achieves high washability

- Openable charging box and removable seal bushing ensures high washability (Excluding G-107C and MG-107C).



- Terminal triangular paddle can be shifted to extract axle housing, enabling thorough cleaning to prevent bacterial growth (optional: MG-307).

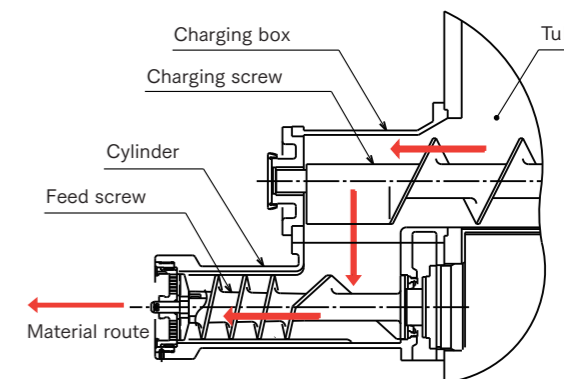


Safe, Thoughtful Design

Automatic material supply volume adjustment and control

Excess material feeding is prevented through control of charging screw revolution speed. This prevents overloaded operation and protects knives and hole plates from damage and excess wear.

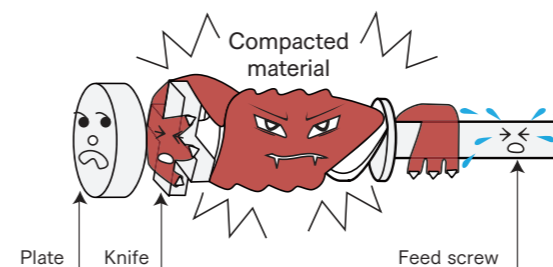
(Available models: G-307, 407/MG-307)



Delay system

Restarting a machine with a significant amount of compacted material inside can damage hole plates and knives. Nippon Career's delay system reduces material residue in the cylinder and prevents related problems by delaying the stopping of the feed screw (screw used to feed processed material) by a fixed interval of time when stopping machine operation.

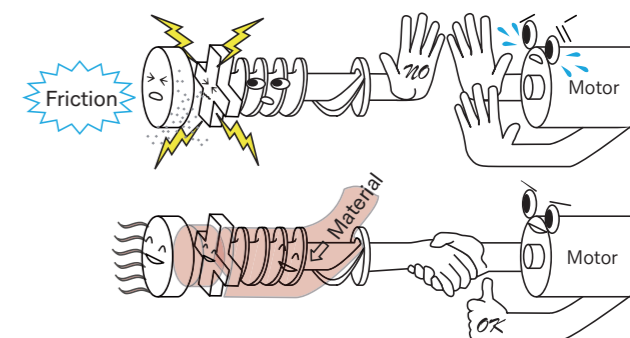
(Available models: G-307, 407/MG-307)



Idling prevention

Detects hole plate and knife-damaging idling and automatically shuts machine down.

(Available models: G-307, 407/MG-307)



G Series Grinders

Thoughtfully designed, high performance grinders

G-107C

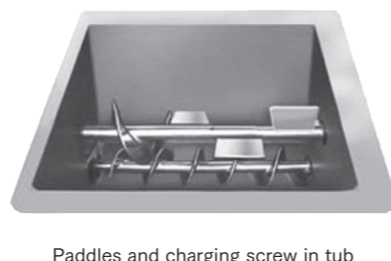
G-157

G-307

G-407



- G-307 and G-407 multi-stage grinders are equipped with presetters standard. Bone collectors optional.
- Tub equipped with anti-bridging paddles. Residual meat is removed by paddles and charging screw.



MG Series Mixer Grinders

Space-saving dual functionality

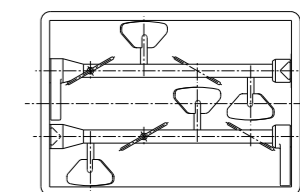
MG-107C

MG-157

MG-307



MG-307 multi-stage mixer grinders equipped with presetters standard and bone collectors optional.



Overlap mixing with paddles on dual axes. During mixing, the charging screw operates in reverse to ensure even circulation and short mixing times (rotates regularly during chopping).



External automatic bone collector (optional)