

MIXER SERIES



NIPPON CAREER
MIXER SERIES
CATALOG

MIXER

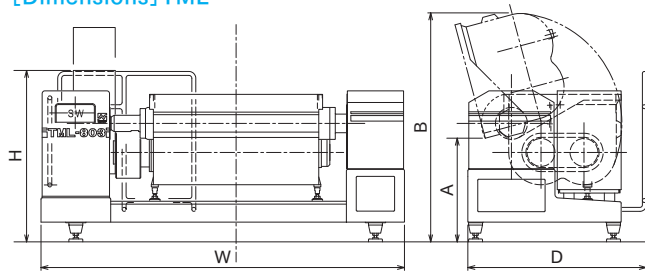
Model		TML-303	TML-403	TML-603	TML-803
Drive	For mixing	3phase 200V 5.5kW		3phase 200V 7.5kW	
	For dumping	3phase 200V 1.5kW		3phase 200V 2.2kW	
Tub	Capacity(full water volume)	350L	450L	700L	900L
	Dumping time	14.7 sec / 105°		19.4 sec / 105°	
	Ejection angle	15°			
	Height	Horizontal level	1100mm		1270mm
During ejection: (Dimensional drawing A)		886mm		893mm	
Dimensions () indicates when tub is dumped: (Dimensional drawing B)		W2275×D1347 ×H1365mm (1787)	W2505×D1347 ×H1365mm (1787)	W2954×D1537 ×H1476mm (1998)	W3254×D1537 ×H1476mm (1998)
Weight		1350kg	1490kg	2300kg	2400kg

Model		M-404
Drive	For stirring	3phase 200V 7.5kW
	For charging	3phase 200V 1.5kW
Capacity(full water volume)		500L
Ejection time		3.5min / 1patch
Ejection port dimensions		204×210mm
Ejection height		595.5mm
Dimensions		W1060×D2152 ×H1470mm
Weight		1200kg

Model		TM-603	TM-803
Drive	For mixing	3phase 200V 7.5kW	
	For dumping	3phase 200V 0.75kW	
Capacity(full water volume)		700L	900L
Dumping time		18.7 sec / 105°	
Ejection angle		15°	
Tub	Horizontal level	1930mm	
	Height	813mm	
Dimensions		W2844×D960 ×H1930mm	W3144×D960 ×H1930mm
Weight		2100kg	2200kg

Model		TM-151
Drive	For stirring	3phase 200V 2.2kW
Capacity (full water volume)		170L
Ejection angle		15°
Tub	When level	1120mm
	During ejection	358mm
Dimensions		W1407×D710 ×H1388mm
Weight		340kg

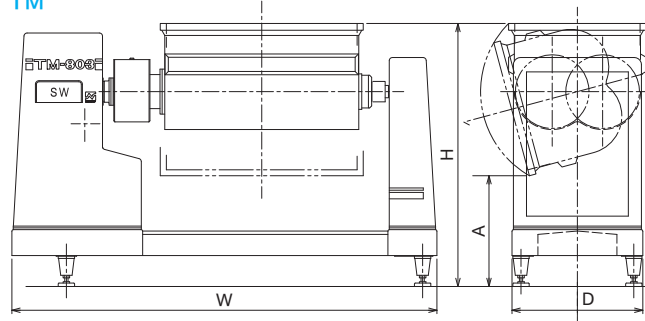
[Dimensions] TML



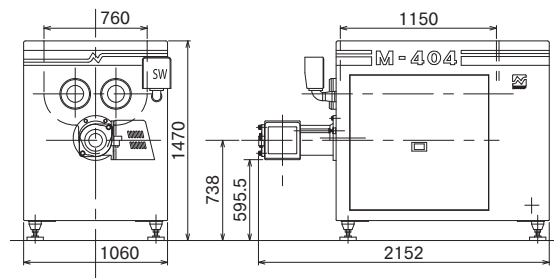
TML	303	403	603	803
W	2275	2505	2954	3254
H	1365	1365	1476	1476
D	1347	1347	1537	1537
A	886	886	893	893
B	1787	1787	1998	1998

TM	603	803
W	2844	3144
H	1930	1930
D	960	960
A	813	813

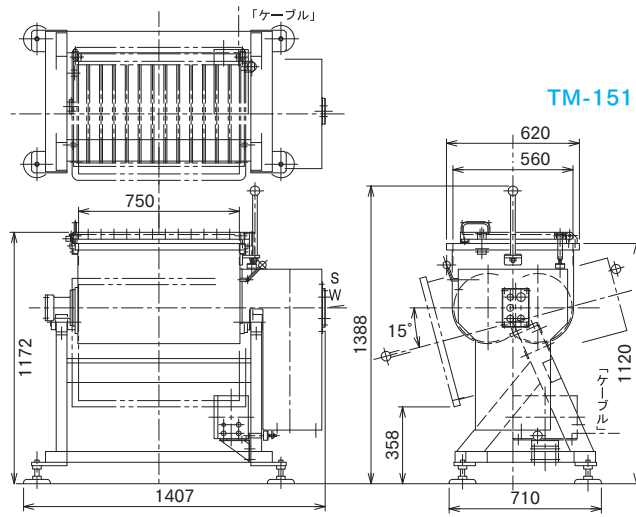
TM



M-404

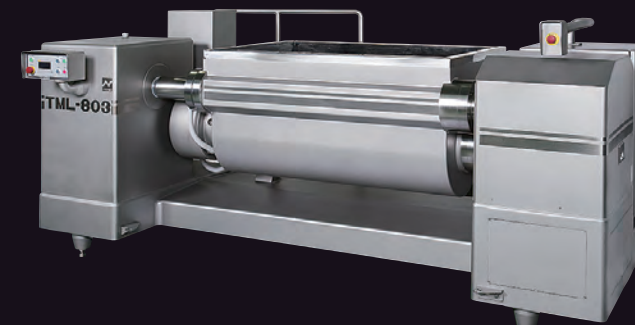


TM-151



Agent:

980-5 Higashi habu-machi, Matsuyama City, Ehime, Japan. 7918043
TEL: +81-89-908-7373
E-mail: eigyou-oversea@nippon-career.co.jp
https://www.nippon-career.co.jp



TML-803

MIXER
TML-303/403/603/803
TM-603/803
M-404 / TM-151

High Efficiency Mixing with Dual Axle Overlapping Paddles

Enables highly efficient, uniform mixing. Achieve optimal mixing with Nippon Career's lineup of 10 machines in four patterns.

Program the optimum mixing pattern

- Freely set clockwise and counterclockwise switching, stirring times, and speeds (TM-151 limited to manual switching and fixed speed).

Efficient mixing

- Nippon Career's proven dual axle overlap paddle mixing enables fast, even processing.

Does not damage material

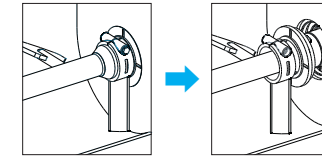
- At the time of ejection, paddle rotation directions selectable; improved paddle shape prevents damage to material.

Exceptionally hygienic and durable

- Every part of the machine that comes in contact with the mixing material, from the tub onwards, as well as the cover panels are made from stainless steel and are exceptionally hygienic and durable.

Improved hygienity

- Terminal triangular paddle can be shifted to extract axle housing, enabling thorough cleaning to prevent bacterial growth. (Excluding TM-151)



Ease of operation

- Operation and maintenance are simple and easy.



Nippon Career Industry Mixer Series

Automatic dumping low-rise models Easy to fill low-rise models



TML-303/403/603/803

- One touch tub dumping.
- Low tub position when level (above floor).
- Four tub sizes.

4 tub sizes

Tub cap. 350ℓ 450ℓ 700ℓ 900ℓ

Automatic dumping models Standard large scale mixers



TM-603/803

- One touch tub dumping.
- Two tub sizes.

2 tub sizes

Tub cap. 700ℓ 900ℓ

Screw ejection model Easy partial ejection for samples



M-404

- Model with screw-based ejection; doesn't require tub dumping.
- Reduces ejection and cleaning labor.

Tub cap. 500ℓ

Manual dumping model Genuine dual axle paddles despite size



TM-151

- Compact model with manual tub dumping.

Pictured with tub dumped



Tub cap. 170ℓ