



NIPPON CAREER
AX-322
CATALOG

AX-322



AX-322
For big material



AX-322 is the biggest model in the slicer series and it allows feeding the large materials like beef round, pork belly etc. It is suitable for processing meat for steak or pork cutlet.

AX-322 Meat Slicer Features Updated from the Previous Model (AX-321)



Touch panel



Swinging cover



Drain chute



Push-button switches

① Processing capacity

- Maximum slicing speed increased to 66 strokes per minute

② Operability

- Touch panel is larger and now in color
- Conveyor belt is easier to attach/detach (and does not require upper shelf removal)
- Air shutoff valve and knife tension controls installed on exterior
- New air gun with flow rate adjustment feature

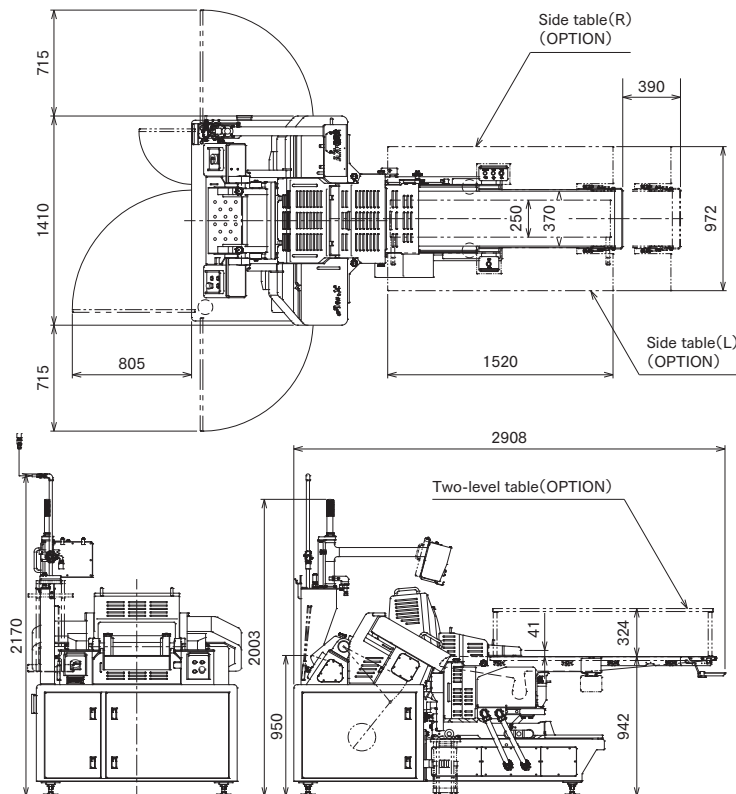
③ Safety

- Safety cover added
- New safety sensor compliant with international standards
- Drain tank dolly structure updated (to prevent tipping)

④ Sanitation

- Drain chute is larger
- Meat scrap disposal (vacuum) feature added to knife scraper section
- Push-button switches are now coverless

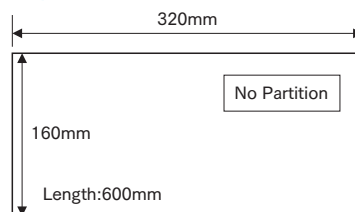
[Dimensions]



[Spec.]

Model	AX-322
Applicable Temperature	-1°C~+5°C
Function	Slicing
Max. dimension of raw material	W320×H160×L600mm
Input port	No partition
Slicing thickness	1~30mm
Max rpm	20~66
Conveyor	W370×L1322mm
Machine dimension	W1410×L2908×H2003mm
Weight	1100kg(Including Tables)
Power	Single phase 220V 2.04kW
Air	0.5MPa 300 ℓ /min.
Water	0.2MPa and higher

[Input Port]



Challenging "Perfection"
NIPPON CAREER INDUSTRY CO., LTD.

980-5 Higashi habu-machi, Matsuyama City, Ehime, Japan. 7918043
TEL: +81-89-908-7373
E-mail: eigyou-oversea@nippon-career.co.jp
https://www.nippon-career.co.jp

Agent: